

Representative Jerome Zeringue
Chairman



Representative Francis Thompson
Vice Chairman

Fiscal Year 2024 Executive Budget Review

Louisiana Judiciary

House Committee on Appropriations
House Fiscal Division

April 17, 2023

Budget/Legislative Analyst: Rebecca Robinson

TABLE OF CONTENTS



This presentation was produced by the House Fiscal Division of the Louisiana House of Representatives.

900 N. 3rd Street
Baton Rouge, LA 70802
house.louisiana.gov/housefiscal/

All data and figures were obtained from the governor's Fiscal Year 2023-2024 Executive Budget and Supporting Documents provided by the Office of Planning and Budget within the Division of Administration along with the Judicial Appropriations Bill as provided by the Louisiana Supreme Court, unless otherwise noted. <https://www.doa.la.gov/oa/opb/budget-documents/>

Topic	Page
Judiciary Organization	3
Supreme Court Justices	4
Jurisdictions and Maps	5
Drug and Specialty Courts	8
Juvenile Courts	10
Historical Spending	11
Sources of Funding	12
Funding Comparison	13
How Courts are Funded in the Bill	14
Judicial Financial Reporting	15
Judiciary Branch Contacts	17

JUDICIARY ORGANIZATION

- The Louisiana Constitution distributes governmental powers among three separate branches: Legislative, Executive, and Judicial
- The Judicial Branch is charged with interpretation and application of laws and is granted the power to issue writs and orders of process in aid thereof
- This branch is comprised of a supreme court, courts of appeal, district courts, and other courts authorized by the constitution
- There are a total of 368 judges that preside over state and local courts

Louisiana Supreme Court

Courts
of
Appeal

District Courts

Other Courts

Five
Circuit
Courts

District
Courts

Criminal
and Civil
Courts of
Orleans

Juvenile
and
Family
Courts

City
Courts

Municipal
Courts

Traffic
Courts

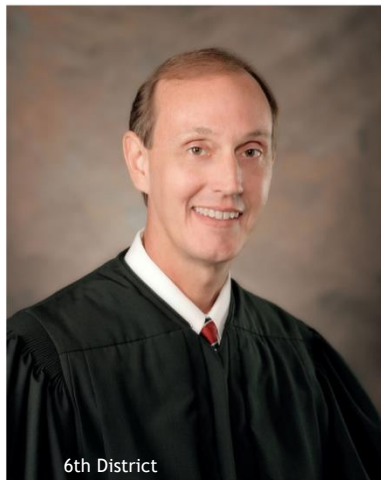
Parish
Courts

LOUISIANA SUPREME COURT JUSTICES



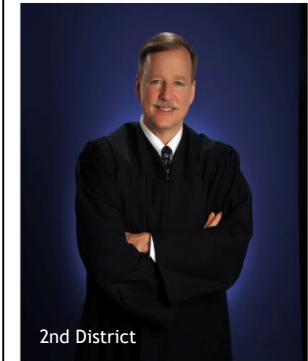
1st District

Louisiana Supreme Court
Associate Justice William J. Crain



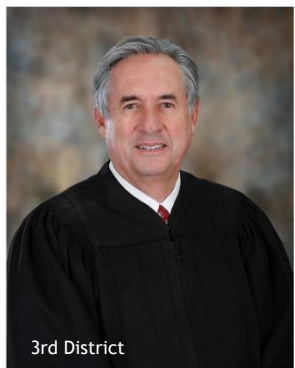
6th District

Louisiana Supreme Court
Chief Justice John L. Weimer



2nd District

Louisiana Supreme Court
Associate Justice Scott J. Crichton



3rd District

Louisiana Supreme Court
Associate Justice James T. Genovese



4th District

Louisiana Supreme Court
Associate Justice Jay B. McCallum



5th District

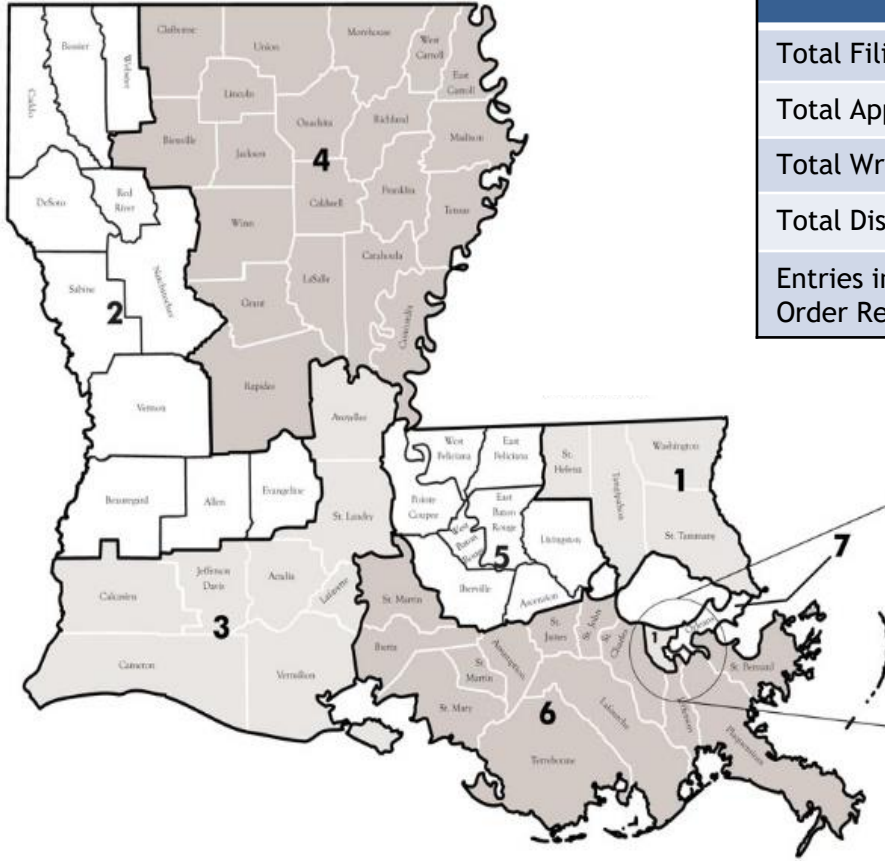
Louisiana Supreme Court
Associate Justice Jefferson D. Hughes III



7th District

Louisiana Supreme Court
Associate Justice Piper D. Griffin

SUPREME COURT



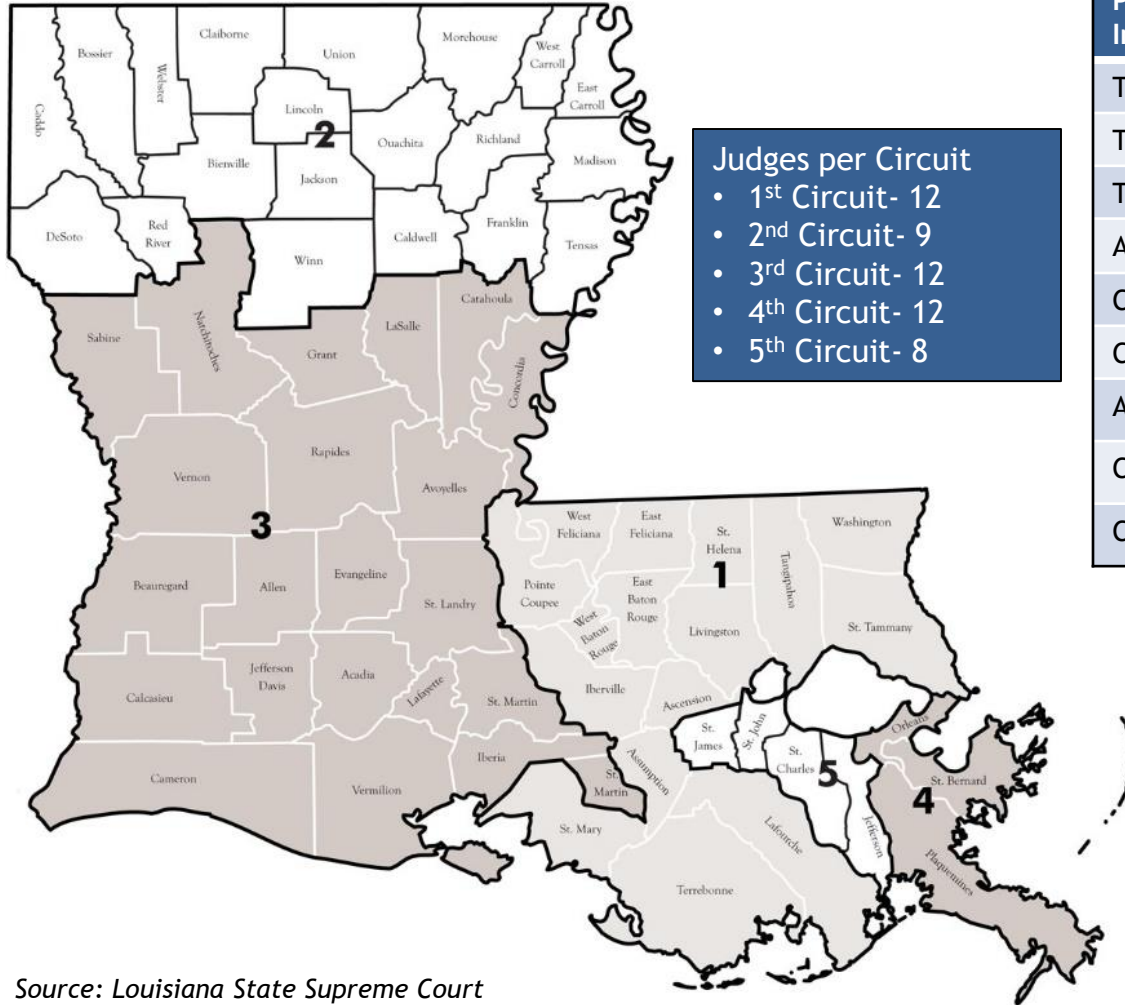
Performance Information	2020	2021	2022
Total Filings	1,506	1,1994	1,889
Total Appeals Filed	4	3	2
Total Writs Filed	1,300	1,991	1,681
Total Dispositions Rendered	1,704	1,869	1,601
Entries in Louisiana Protective Order Registry	26,184	28,946	30,806



The Supreme Court is Louisiana's highest court. It is domiciled in the city of New Orleans. In addition to hearing cases, the Supreme Court establishes procedural and administrative rules for Louisiana courts, regulates the legal profession, and promulgates and updates the Code of Judicial Conduct.

Source: Louisiana State Supreme Court

COURTS OF APPEAL



Judges per Circuit

- 1st Circuit- 12
- 2nd Circuit- 9
- 3rd Circuit- 12
- 4th Circuit- 12
- 5th Circuit- 8

Performance Information	2020	2021	2022
Total appeals filed	1,191	1,322	1,430
Total writs filed	2,364	3,168	2,715
Total dispositions	3,753	4,691	4,431
Average number of days from filing to argument:			
Criminal cases	174	190	149
Civil cases	166	148	154
Average number of days from argument to opinion:			
Criminal cases	51	46	44
Civil cases	55	51	45

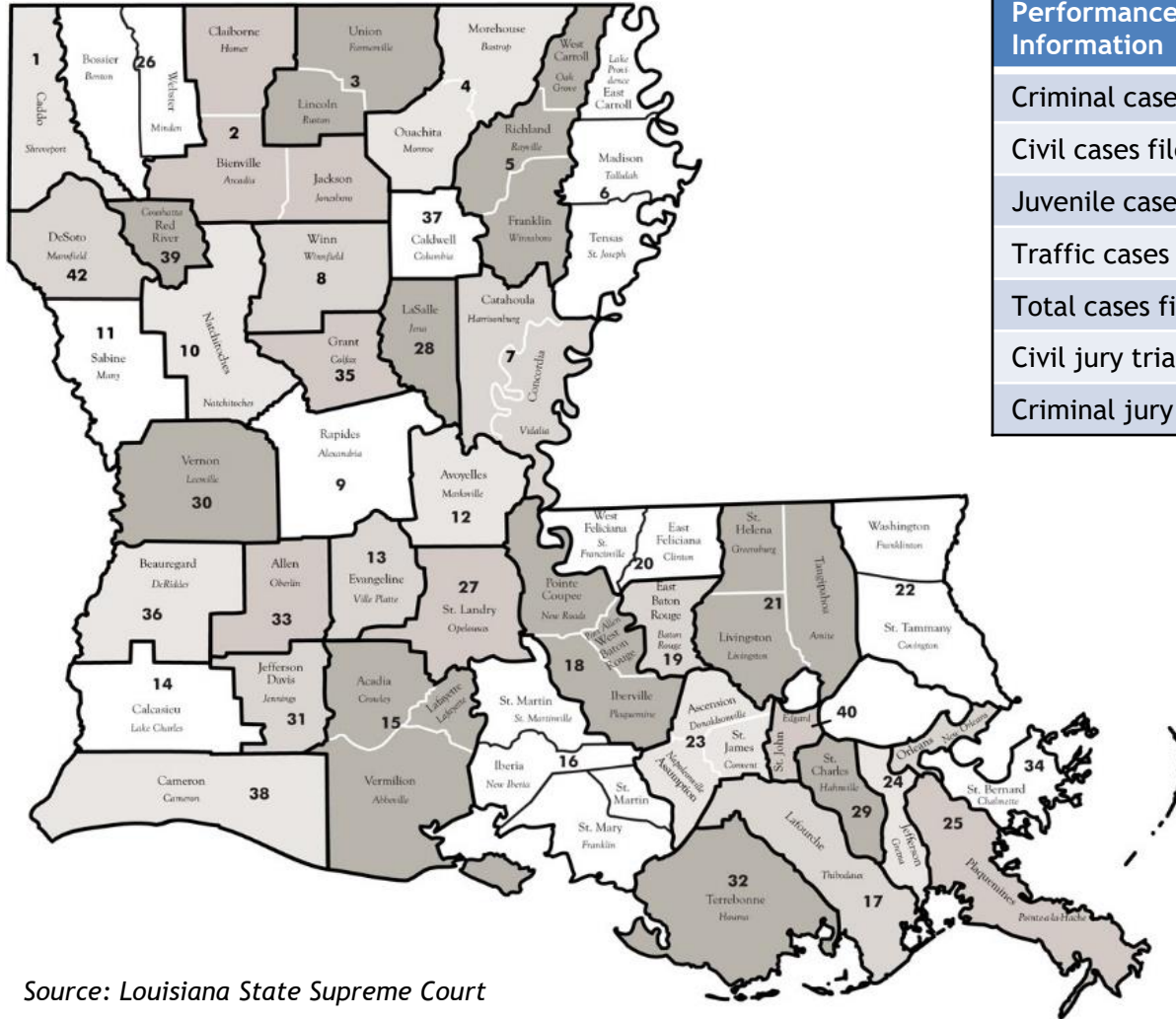
Louisiana has established the intermediate Courts of Appeal between the district courts and the Supreme Court

There are 5 Courts of Appeal

Judicial terms on the Courts of Appeal are 10 years

Source: Louisiana State Supreme Court

DISTRICT COURTS



Performance Information	2020	2021	2022
Criminal cases filed	119,245	124,635	122,536
Civil cases filed	117,167	124,423	134,327
Juvenile cases filed	17,915	18,882	20,406
Traffic cases filed	252,909	225,351	230,225
Total cases filed	507,236	493,291	507,494
Civil jury trials	38	101	160
Criminal jury trials	152	276	495

Louisiana has 43 judicial districts

Each district contains at least one parish, has at least one judge, and elects a chief judge

Judicial terms on district courts are six years

Source: Louisiana State Supreme Court

DRUG AND SPECIALTY COURTS

There are 71 operational Louisiana specialty courts, of which 47 are drug courts.

Other Louisiana specialty courts are Reentry Courts, Veterans Treatment Courts, Family Preservation/Treatment Courts, Co-occurring/Behavioral Health Courts and Sobriety/DWI Courts. Each specialty court program is comprised of a team, which is led by a judge, and includes a coordinator, treatment staff, prosecutor, public defender, law enforcement representatives, case manager, and/or other stakeholders.

2022 Drug and Specialty Court Participants

	Adult Drug Courts	Juvenile Drug Courts	Family Preservation Courts	Behavioral Health Courts	DWI Courts	Reentry Courts	Veterans Court	Total All Courts
Individual Participants Served	3,056	275	369	213	273	212	87	4,485
Individuals Screened	1,760	229	368	317	138	39	72	2,923
New Participants Admitted	1,293	158	210	98	109	31	45	1,944
Treatment Hours Administered	204,379	4,632	10,527	2,288	17,504	1,912	3,807	245,049
Drug Tests Administered	105,392	2,782	8,437	3,369	10,672	4,888	1,680	137,220

Source: Louisiana State Supreme Court

DRUG AND SPECIALTY COURTS

2022 Drug and Specialty Court Program Successes

	Adult Drug Courts	Juvenile Drug Courts	Family Preservation Courts	Behavioral Health Courts	DWI Courts	Reentry Courts	Veterans Court	Total All Courts
Total Drug Free Babies	26	0	17	3	0	0	0	46
Obtained GED/HiSET	7	7	1	0	0	2	0	17
Obtained Employment	677	71	69	14	0	30	8	869
Obtained Secure Housing	235	2	38	5	0	24	4	308
Community Service Hours	22,107	398	255	274	13,860	378	652	37,924

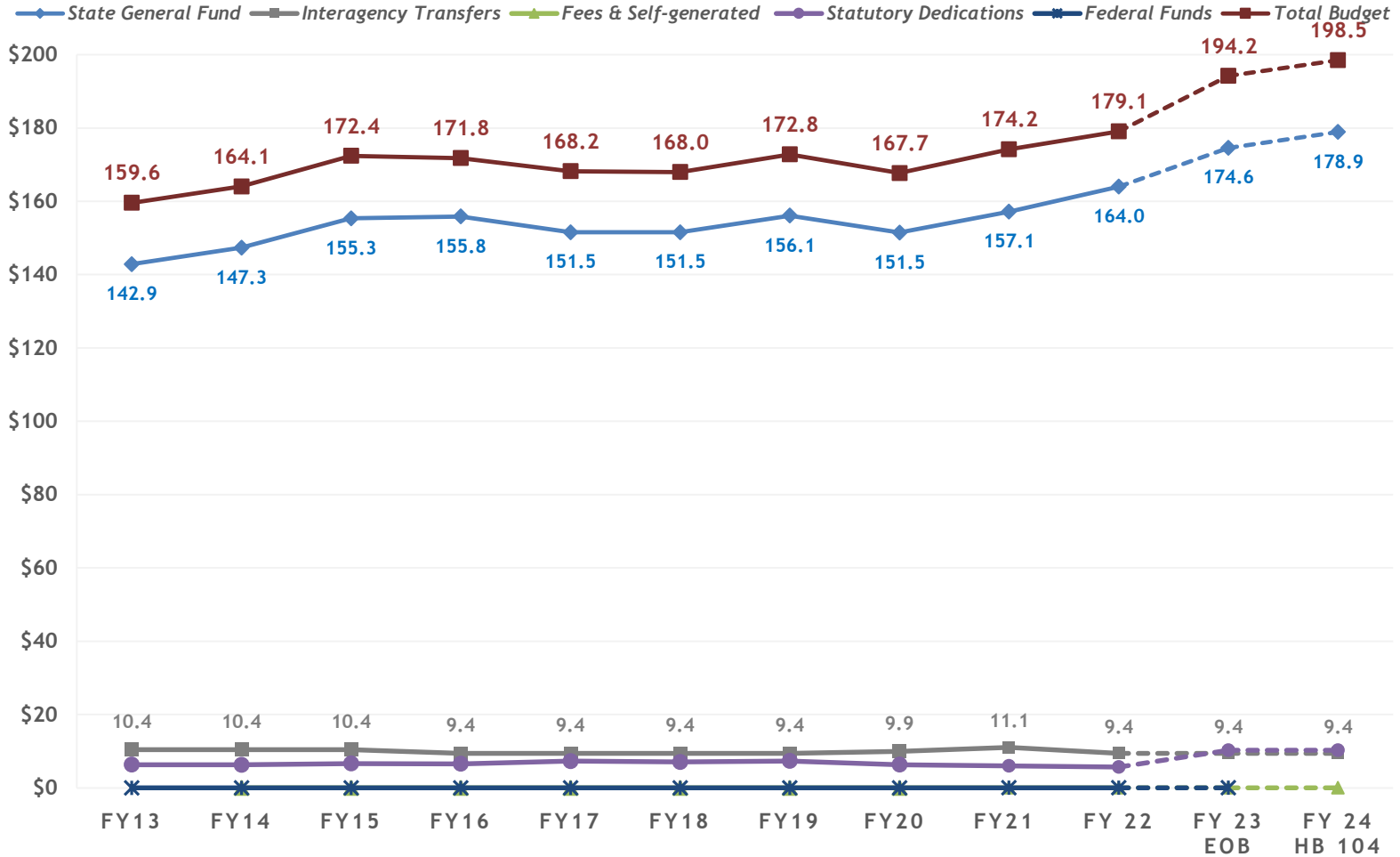
Recidivism rate for participants in Drug and Specialty Court is 6%.

JUVENILE COURTS

Juvenile Judicial Activity			
	Filings	Charges	Children
Formal FINS	1,034	1,082	1,032
Child in Need of Care Cases	757	0	1,001
Domestic Abuse	151	0	151
Juvenile Traffic	1,729	2,697	1,729
Juvenile Delinquency	3,128	7,255	3,232
Mental Incapacity to Proceed	27	30	27
Adoptions	230	0	240
Child Support	1,562	0	825
Mental Health	27	0	27
Other	1,967	0	1,993

Source: Louisiana State Supreme Court

HISTORICAL SPENDING



10 Year Spending Change

Total 2.5%

SGF 2.5%

IAT <1%

SD 5.5%

SOURCES OF FUNDING IN HB 104

State General Fund

\$178.8 M

The chief operating fund of the State recognized by the Revenue Estimating Conference from various taxes, licenses, fees, and other revenue sources except for those identified as other means of financing

Interagency Transfers

\$9.4 M

From the Department of Children and Family Services federal Temporary Assistance for Needy Families (TANF) funds:

- \$5,400,000 for expenses of Drug and Specialty Court programs
- \$3,992,850 for the expenses of the Court Appointed Special Advocates (CASA) program

Statutory Dedications

\$10.2 M

\$6,223,724 out of the Judges Supplemental Compensation Fund:

- Used for salary supplements to judges and commissioners, administrative expenses for the board, and state or municipal retirement funds
- The fund is comprised of fees collected on civil court fillings

\$4,017,201 out of the Case Management Information System Fund:

- Used to provide a statewide information system for tracking and managing criminal, civil, juvenile, traffic, and appellate cases, as well as protective orders and information from the Department of Public Safety and Corrections
- The fund is comprised of fees assessed on all criminal and traffic convictions as provided under C.Cr.P. 887(F)

FUNDING COMPARISON

Means of Finance	FY23 Existing Operating Budget 12/1/22	FY 24 Executive Funding Recommendation	FY 24 HB 104 Requested Budget	Change FY 23 EOB/HB 104 to Recommendation	
SGF	\$ 174,577,666	\$ 178,883,689	\$ 178,883,689	\$ 4,306,023	2.4%
IAT	9,392,850	9,392,850	9,392,850	0	0.0%
FSGR	0	0	0	0	0.0%
Stat Ded	10,240,925	10,240,925	10,240,925	0	0.0%
Federal	0	0	0	0	0.0%
Total	\$ 194,211,441	\$ 198,517,464	\$ 198,517,464	\$ 4,306,023	2.2%

State General Fund Comparing FY 23 EOB to Executive Recommendation/HB 104

\$1.9 M - 2.5% annual increase in salaries for judges of the Supreme Court, courts of appeal, and district courts, as well as the state-paid salaries of the judges of city court and parish courts in accordance with Act 178 of the 2019 Regular Session

\$2.3 M - increase to expand the Drug & Specialty Court Program, Court Appointed Special Advocates, and Families in Need of Services

HOW COURTS ARE FUNDED IN HB 104

Fully Funded

Supreme Court entities:

- Salaries and benefits of 7 Justices
- Salaries and benefits of staff, Judicial Administrator's Office, and Judiciary Commission
- Office expenses and building maintenance of the Supreme Court, Judicial Administrator, and the Judiciary Commission
- Law Library of Louisiana
- Retired Judge Compensation, salaries and expenses of transferred judges, and widows pensions
- Judicial College
- Civil commitment matters
- Paul M. Hebert Law Center for record storage
- Louisiana Protective Order Registry
- Families in Need of Services Program
- Drug and Specialty Court Programs
- CASA Programs

Courts of Appeal (5 Circuits):

- Salaries and benefits of 53 Judges
- Salaries and expenses of operation and maintenance of each of the 5 circuit courts

District Courts:

- Salaries and benefits of 191 District Judges
- Salaries and benefits of 27 Judges of Orleans Civil and Criminal District Courts
- Salaries and benefits of 2 Court Reporters in the 20th JDC
- Salaries of 17 Juvenile and Family Court Judges

Partially Funded

District Courts:

- Office and travel expense reimbursement not to exceed \$5,000 per judge per year (prorated if a judge presides over more than one parish)
- Expenses of the Clerk of Orleans Civil District Court
- Salaries of commissioners of the 19th and 15th JDCs
- Judicial Expense Fund of the 19th, 15th, and 10th JDCs for office expenses
- Law clerk salary of the 20th JDC
- Salaries and benefits of 17 minute clerks, 30 court reporters, 4 commissioners, Judicial Administrator and assistants, 13 law clerks, and 4 secretaries of Criminal District Court, Orleans Parish
- Expenses of the Sanity Commission and the Board of Jury Commissioners, Orleans Criminal District Court

Other Courts - required by statute:

Salaries of 60 City Court Judges, 7 Municipal and Traffic Court Judges and 1 Parish Court Judge (partially funded based on a formula)

Other Courts - not required by statute:

- Orleans Parish Juvenile Court Reporters salaries
- Judges' Assistance Program
- Orleans Parish Juvenile Protective Care Monitoring Program

Not Funded

All expenses of District, City, Traffic, and Parish Courts not expressly funded in the appropriations bill, including building maintenance, staff salaries and benefits, and operating expenses

JUDICIAL FINANCIAL REPORTING

In April 2022, the Louisiana Supreme Court adopted Part G, General Administrative Rule, Section 15: Revenue and Expense Reporting. The rule requires all courts to collect and report revenue and expenditure data. The courts submit all data to the Supreme Court, which then publishes a publicly available report containing the data (data reported below is for FY 2022-2023).

Revenue	City Courts		District Courts		Courts of Appeal		Grand Total	
	Amount	Percent	Amount	Percent	Amount	Percent	Amount	Percent
State Judiciary Appropriations	\$5,958,796	9.6%	\$81,656,776	42.8%	\$54,506,024	97.8%	\$142,121,596	46.1%
Local sources	\$37,749,076	60.8%	\$56,804,720	29.8%	\$0	0%	\$94,553,796	30.7%
Bail bond, court costs fees, and contempt	\$11,607,806	18.7%	\$24,923,290	13.1%	\$32,050	0.1%	\$36,563,146	11.9%
Miscellaneous revenue	\$1,173,766	1.9%	\$1,927,586	1.0%	\$1,695	0%	\$3,103,047	1.0%
Civil	\$5,377,982	8.7%	\$20,025,179	10.5%	\$1,193,250	2.1%	\$26,596,411	8.6%
Other grants	\$88,895	0.1%	\$4,744,525	2.5%	\$0	0%	\$4,833,420	1.6%
Interest, other revenue	\$88,513	0.1%	\$496,236	0.3%	\$16,211	0%	\$600,960	0.2%
Total Revenue	\$62,044,834	100.0%	\$190,578,312	100.0%	\$55,749,230	100.0%	\$308,372,376	100.0%

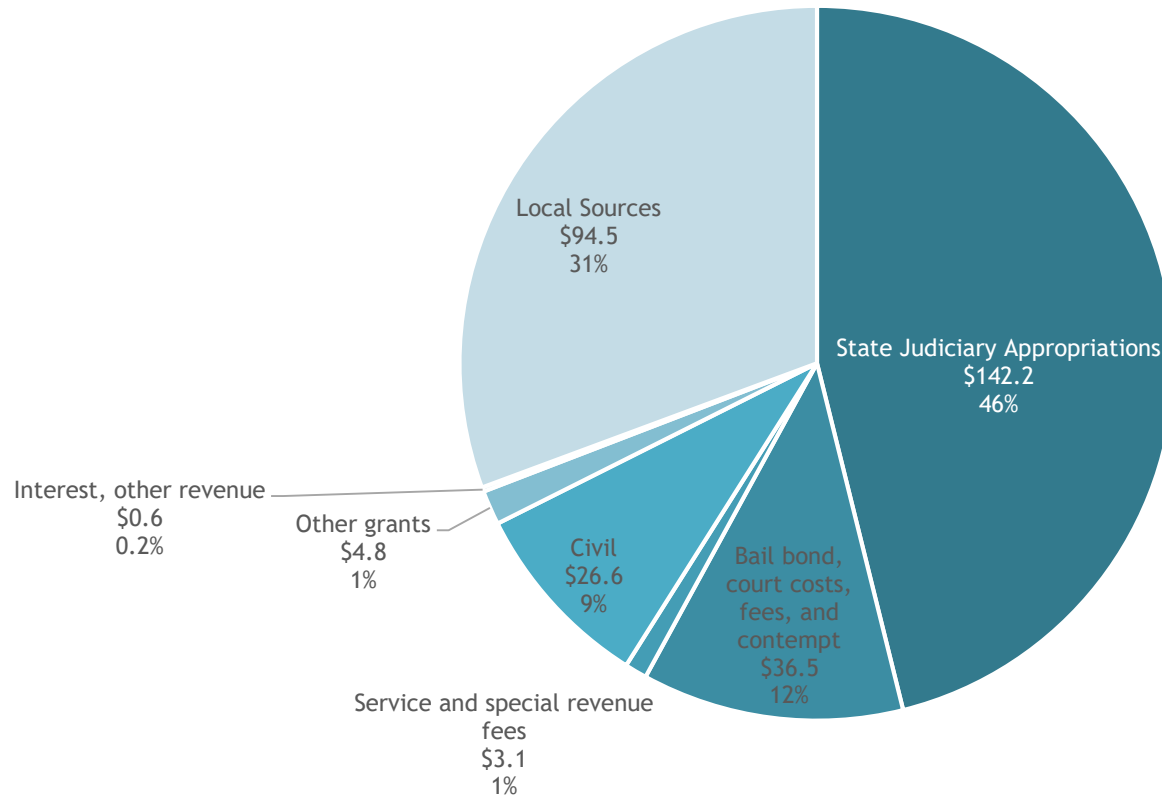
Expenses	City Courts		District Courts		Courts of Appeal		Grand Total	
	Amount	Percent	Amount	Percent	Amount	Percent	Amount	Percent
Judge salaries and related benefits	\$13,541,827	22.3%	\$59,713,826	32.0%	\$13,218,245	24.1%	\$86,473,897	28.6%
Employee salaries and related benefits/costs	\$36,979,376	60.9%	\$89,259,748	47.9%	\$35,115,495	64.1%	\$161,354,619	53.4%
Judge travel and support expenses	\$721,554	1.2%	\$2,983,573	1.6%	\$611,793	1.1%	\$4,316,920	1.4%
Employee travel and support expenses	\$387,238	0.6%	\$899,101	0.5%	\$247,545	0.5%	\$1,533,884	0.5%
Office supplies, services, and expenses	\$3,835,865	6.3%	\$9,461,336	5.1%	\$4,209,284	7.7%	\$17,506,485	5.8%
Professional services	\$1,779,376	2.9%	\$5,348,181	2.9%	\$408,323	0.7%	\$7,535,880	2.5%
Courtroom Expenses	\$504,569	0.8%	\$5,820,402	3.1%	\$96,543	0.2%	\$6,421,514	2.1%
Specialty court expenses	\$434,973	0.7%	\$7,075,744	3.8%	\$0	0%	\$7,510,717	2.5%
Building services and maintenance	\$2,182,253	3.6%	\$4,832,852	2.6%	\$892,638	1.6%	\$7,907,743	2.6%
Other expenses	\$400,518	0.7%	\$1,106,907	0.6%	\$10,206	0%	\$1,517,631	0.5%
Total Expenses	\$60,767,549	100.0%	\$186,501,669	100.0%	\$54,810,072	100.0%	\$302,079,290	100.0%

Source: Louisiana Supreme Court Rule on Annual Revenue and Expense Reporting (March 15, 2023)

JUDICIAL FINANCIAL REPORTING

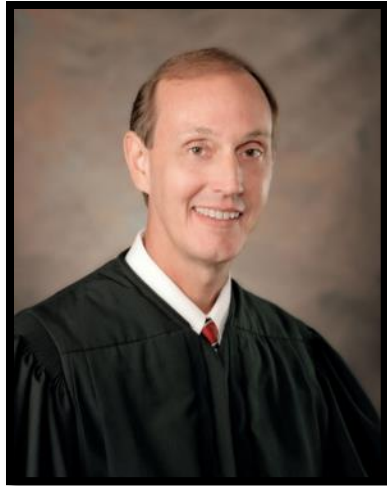
FY 22 Total Court Revenue \$308.4 M

(In \$ Millions)



Source: Act 116 of 2021 Uniform Court Budget Documents, Louisiana Supreme Court

JUDICIARY CONTACTS



Hon. John L. Weimer
Chief Justice

Justice Piper D. Griffin

Bryan Wolff
Chief Financial Officer
